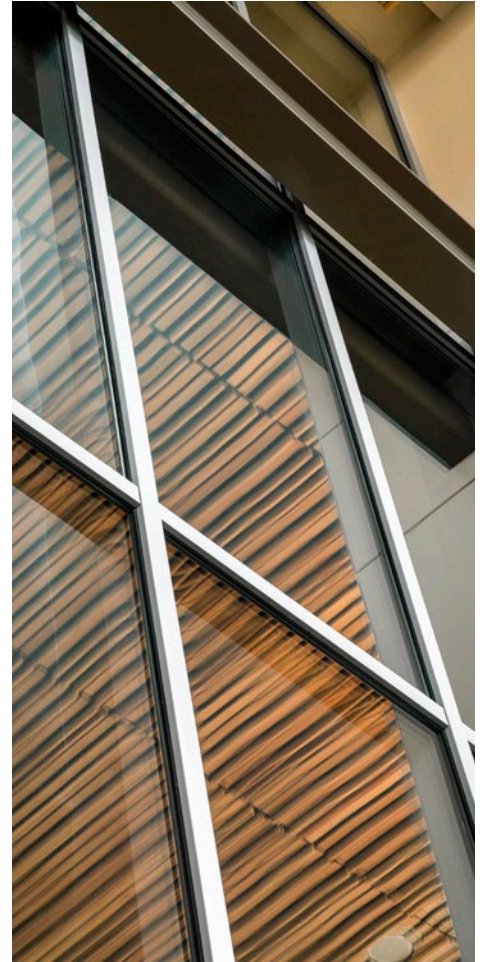




Project: MultiCare Good Samaritan Hospital, Dally Tower
Location: Puyallup, WA
Architect: Good Sam Design Collaborative, in conjunction
with Clark/Kjos Architects and GBJ Architecture
Product: Fireframes® Curtainwall Series with Pilkington
Pyrostop® glass firewall





FIRE-RATED CURTAIN WALL PROVIDES RIGHT DOSE OF FIRE PROTECTION AND DAYLIGHT IN HEALTHCARE FACILITY

When Good Sam Design Collaborative, Clark/Kjos Architects and GBJ Architecture embarked on the design of the Dally Tower at MultiCare Good Samaritan Hospital in Puyallup, Washington, a point of emphasis was providing visitors with increased access to natural light. Greater amounts of daylight in healthcare occupancies can help enhance therapeutic experiences, establish environments in which patients can heal faster, and aid building teams in earning points towards LEED® certification.

To ensure Dally Tower patients and visitors have access to natural daylight within the nine-story, 357,000-square-foot facility, the building and design team implemented numerous daylighting features, including glass canopy covered entries, expansive windows and circulation hubs oriented to allow light to easily transfer between interior spaces.

One challenge with the daylighting design vision was maintaining adequate light transfer in areas required to meet fire and life safety codes. Such was the case with the building's central lobby elevator. A large elevator with a glass façade would help transmit light streamed from the elevator's skylight into neighboring glass-fronted patient admitting offices and waiting rooms. It would also help create an open aesthetic. However, to meet fire and life safety codes as an area of egress, the elevator core would need to provide fire resistance. There are many different types of fire-resistant materials that meet life safety code requirements, but relatively few that allow light transfer.

To meet these multiple needs, the building and design team used the Fireframes® Curtainwall Series from Technical Glass Products (TGP) to skin the front side of the central lobby's elevator. The multi-story fire-rated glass curtain wall combines sleek fire-rated frames with Pilkington Pyrostop® glass for sophisticated spans of glazing in fire separations. It is available with fire ratings up to two hours, and protects against radiant and conductive heat transfer – a required characteristic of glass used as a wall.

Today, the multi-story, fire-rated curtain wall helps the healthcare facility provide patients and visitors with abundant access to natural light. The Dally Tower is Washington State's first inpatient hospital to receive LEED Gold certification.

For more information on the Fireframes Curtainwall Series, along with TGP's other specialty architectural glass and framing, visit www.fireglass.com.

